

Panelfold®

10650/PAN
BuyLine 7239

Fifty Years Of Innovative Space Division Systems



Panelfold®
1953 - 2003

**Operable and Relocatable Walls
Acoustical Accordion Folding Partitions**

PANEFOLD HISTORY AND SERVICES

Now in its fifth decade, Panelfold has long been recognized as the innovative leader in the folding door, acoustical accordion folding partition and the operable and relocatable wall industry. Established in 1953, the company has progressed from its first small factory to a 140,000 square foot modern facility in suburban Miami, Florida, U.S.A. and has been a major employer in Miami's multi-cultural community.

Panelfold products are available to provide almost every conceivable size space division requirement with more product models, acoustical values, price ranges, and variety of surfacing materials and work surfaces than any other manufacturer.

PRODUCT OVERVIEW

Moduflex® Operable Walls are made up of nominally forty-eight inch wide by four or three inch thick, steel or general purpose panels. The panels are suspended from an overhead heavy-duty aluminum or steel track and are carried by steel, ball-bearing wheels. The panels extend from a stored position to form a flat panel wall across the opening. *Pages 3-6*

Sonicwal® Accordion Partitions are made up of twin walls of laminated panels. The partitions are suspended from a single overhead heavy-duty aluminum track and are carried by nylon-tired, steel ball-bearing wheel assemblies. The panels unfold from the stack to form a partition across the opening. *Pages 7-10*

Scale® Folding Partitions are made up of single walls of laminated panels. They are suspended by heavy-duty aluminum track and are carried by nylon-tired, steel ball-bearing wheels. Panels unfold from the stack to form a partition across the opening. *Pages 10-12*

Fabricwal® Accordion Partitions are made up of twin soft covers attached to a pantograph framework of steel hinges and rods. The partitions are suspended from a single overhead heavy-duty aluminum track and are carried by nylon-tired, steel ball-bearing wheels. They unfold from the stack to the closed position to form a partition across the opening. *Pages 13-14*

PrimeSpacer® Portable Wall Panels are floor-supported portable panel walls that install quickly between ceilings and floors without permanent attachments, and relocate without loss of material. They feature **Sheer Look®** panel edges with no exposed trim. *Page 16*

EchoSorb® Acoustical Panels are fabric wrapped aluminum framed NRC.75, panels that control unwanted annoying sound reflection and speech distortion. Please refer to Sweet's **09800/PAN**.



Features and Benefits

Each of the Panelfold space division systems has its own unique acoustical, appearance, hanging weight, and cost characteristics. The materials, designs, and craftsmanship used for all the product lines have the performance that has established Panelfold as the quality leader over the years.

Panelfold Information Systems

Architectural Products Manual



Contains Products Overview and History; Product Selections Guides and Product Briefs with drawings, details, and layouts, 3-Part Guide Specifications; Surfacing Materials Selections Guide and Color Selectors.

Panelfold Interactive CD-ROM



An advanced CD-ROM containing electronic product information, video, test data, installation instructions, interactive 3 Part Specifications and uniformly formatted CAD Drawings and Details (in both DWG and DXF) ready for integration into construction documents, Color Selectors, Catalogs and more.

Sweet's CD



Electronic search and selection tool on CD-ROM published quarterly by Sweet's Construction Group. Contains complete product information, interactive 3 Part Specifications and uniformly formatted CAD Drawings and Details (in DWG).

Panelfold on the World Wide Web



The content of the Panelfold Interactive CD-ROM, including Drawings and Specifications, may be accessed live on the web. Changes and additions to content are promptly posted, making this interactive tool the most up-to-date source of complete information available: **www.panelfold.com**

Moduflex®

10650/PAN
BuyLine 7239



Panelfold®
1953-2003

Steel and General Purpose Operable Walls

Moduflex® Series 800 Steel Operable Walls

Moduflex Series 800 high performance operable walls have 4" (100mm) thick steel panel faces welded to steel frames in a unique unibody construction.

- Sound loss ratings to STC 55
- Sound absorption to NRC .90
- Optional U.L.® 1 Hour fire rating
- Sheer Look® panel edges
- Heights to 44' (13411 mm)

ACOUSTICAL PERFORMANCE

Moduflex Series 800 operable walls have attained stringent independent laboratory acoustical ratings of STC 47 to STC 55. An optional noise reduction coefficient of NRC .90 is available using steel perforated faces. Panels have vertical and horizontal acoustical seals placed in a double row labyrinth for optimum performance.

NON-COMBUSTIBLE SEAMLESS STEEL CONSTRUCTION

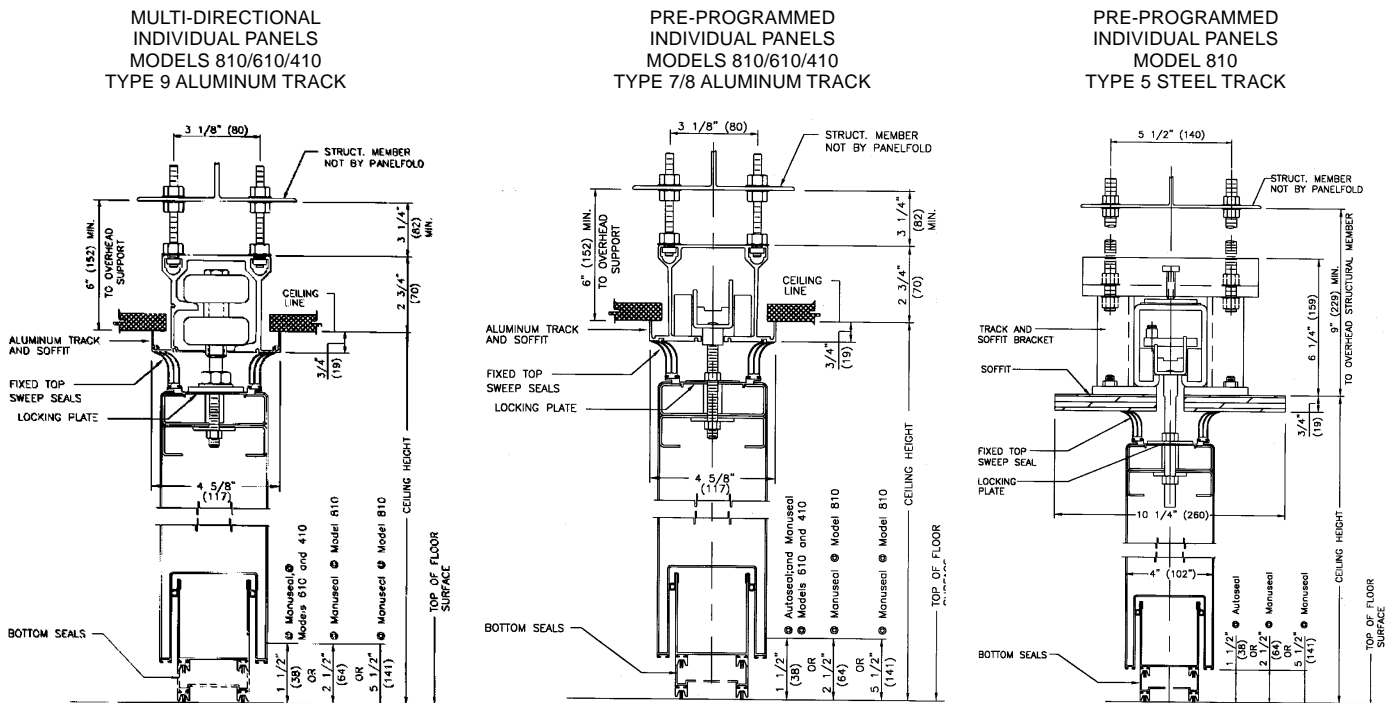
Rugged one-piece 14-gauge steel frames are permanently and invisibly welded to one-piece seamless steel faces regardless of panel width or height. Bronze finish deep-nesting, interlocking vertical panel edges and horizontal operable seals are made of steel for extra impact strength and fire resistance.

FULL RANGE FEATURES

A full range of options, including expanding panels, single and double pass-doors, self-illuminated exit signs, and chalk and marker surfaces may be specified. These elegantly styled operable walls out perform most permanent walls.

TYPICAL VERTICAL SECTION - HEAD DETAILS FOR MODUFLEX® WALLS

For complete details, see Product Briefs, Interactive CD-ROM or Panelfold website at www.panelfold.com



All Dimensions Shown in Parentheses are Millimeters

BOTTOM SEALS

Clearance type seal in retracted position.



Seal lowered to floor. Models with 1 1/2" (38mm), 2 1/2" (64mm), and 5 1/2" (141mm) clearance are available. Automatically actuated seals have 1 1/2" (38mm)

Moduflex® Series 600 and Series 400 General Purpose Operable Walls

10650/PAN
BuyLine 7239

Moduflex Series 600 and **400** operable walls for general purpose applications have high density panel faces laminated to metal frames providing strength, mass and stability.

- **Sound loss ratings to STC 50**
- **Class “A” flame spread rating**
- **Full height pin tackable panels**
- **Sheer Look® panel edges**

ACOUSTICAL PERFORMANCE

Both **Moduflex Series 600** and **Moduflex Series 400** operable walls have attained stringent independent laboratory acoustical ratings to STC 50. Panels have vertical and horizontal acoustical seals placed in a double row labyrinth for optimum performance.

OPERATING EASE

Regardless of height, **Series 800**, **Series 600**, and **Series 400** panels roll conveniently along their overhead tracks with ease and minimum setup time. A family of smooth rolling track and carrier systems that satisfy every multiple panel use and remote storage requirement provide for “user-friendly” panel operation.

FULL RANGE FEATURES

A full range of standard options include expanding panels, single and double pass-doors, self-illuminated exit signs, and chalk and marker surfaces and a wide range of surfacing materials. Special features include custom color matching panel edges, windows, custom millwork and curved layouts.



GUIDE SPECIFICATIONS FOR MODUFLEX® OPERABLE WALLS

PART 2. PRODUCTS

2.1 OPERABLE WALLS shall be manufactured by Panelfold, Inc., Miami, Florida, U.S.A. and installed by an authorized representative of the manufacturer in openings prepared by others to Moduflex® Series (specify: 800; 600; or 400) requirements.

2.2 OPERATION shall consist of a series of manually or electrically operated flat panels, top supported. Top and bottom seals shall be as specified in paragraph 2.8.

2.3 PANEL CONFIGURATION shall be as indicated on the plans.

2.4 PANELS:

2.4.1 SERIES 800 shall be 4" (102mm) thick and nominally 49" (1245mm) wide, one piece, all steel construction. Continuous steel panel faces shall be invisibly welded to minimum 14 gauge (1.90mm) one-piece steel frames. Horizontal or vertical spliced frames or faces shall not be permitted. Interlocking vertical panel edges shall be made of steel.

2.4.2 MODEL 840GWE shall be 3" (76mm) thick and nominally 49" (1245mm) wide, one piece, all steel construction with light-weight, impact resistant honeycomb core. Continuous steel panel faces shall be invisibly welded to minimum 16 gauge (1.62mm) one-piece steel frames. Horizontal or vertical spliced frames or faces shall not be permitted. Interlocking vertical panel edges shall be made of steel.

2.4.3 SERIES 600 shall be 4" (102mm) thick, **SERIES 400** 3" (76mm) thick and nominally 49" (1245mm) wide. Panel faces shall be laminated to metal frames. Panels shall have appropriate internal insulation to achieve specified STC. The tops of the panels shall be reinforced to support suspension components.

2.4.4 VERTICAL EDGES of the panels shall not require trim thus minimizing the appearance of the vertical joining of the Sheer-Look® panels.

2.5 PANELS shall be factory surfaced as specified.

2.6 HANGING WEIGHT of panels shall not exceed 12 lbs./ft² (58.6Kg/m²).

2.7 ACOUSTICAL RATING of panels as tested by an independent acoustical laboratory in accordance with ASTM E90-85 test procedures in a full scale 14'0" (4267mm) by 9'3" (2819mm) opening shall be (specify: STC 55; STC 52; STC 50; STC 49; STC 47; STC 44; or STC 33). Optional N.R.C. .90, (Series 800 only) STC 50 panels shall be supplied where indicated on the plans.

2.8 SOUND SEALS shall be as specified.

2.9 PANELS shall be hinged with manufacturer's standard butt-type hinges.

2.10 POCKET DOORS where indicated on the plans shall be manufactured of the same materials as the panels. Hinges shall be standard butt-type.

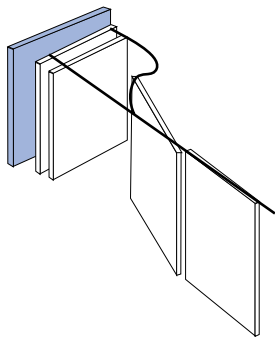
2.11 OPTIONAL U.L.® ONE HOUR fire rated **SERIES 800 FIRECOUSTIC®** models, walls shall be supplied where indicated on the plans.

2.12 OPTIONS SPECIFICATIONS

2.12.1 PASS DOORS where indicated shall be manufactured of the same materials, thickness and acoustical rating as the panels. Double doors and A.D.A. compliant doors shall have friction roller latches.

2.12.2 TACKBOARDS, CHALKBOARDS, MARKERBOARDS where indicated shall be nominally [specify 48" (1219mm) high; or full panel height. Color to be selected from manufacturer's standards and bronze trimmed.

TYPES OF APPLICATIONS

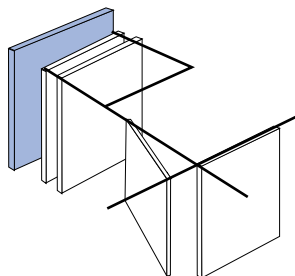
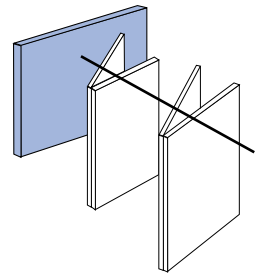


MODEL 810PP/610PP/410PP

Pre-Programmed™ Individual panels, each top supported with two trucks of four radial type, steel ball bearing wheel assemblies are the easiest of all panel systems to manually operate. Panels may be moved one at a time to and from side, angle or remote storage areas. Panels are pre-programmed to roll effortlessly through track diverters to create multiple use room layouts. Available in heights to 44 feet (13411 mm).

MODEL 820/620/420

Panels hinged in groups of two, each top supported by a truck of four radial type, steel ball-bearing wheels may be conveniently manually operated and "center" stacked along a single overhead track. Available in heights to 16 feet (4876 mm).

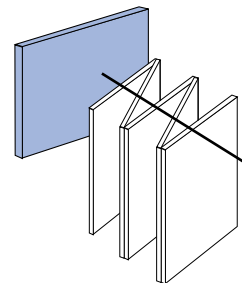


MODEL 810MD/610MD/410MD

Multi-Directional individual panels, each supported with two dual horizontal rotating ball bearing wheeled carrier assemblies, easily negotiate 90° 2, 3 and 4-way intersections. Each panel can be turned in any direction, anywhere along the track grid. Available in heights to 16 feet (4876 mm).

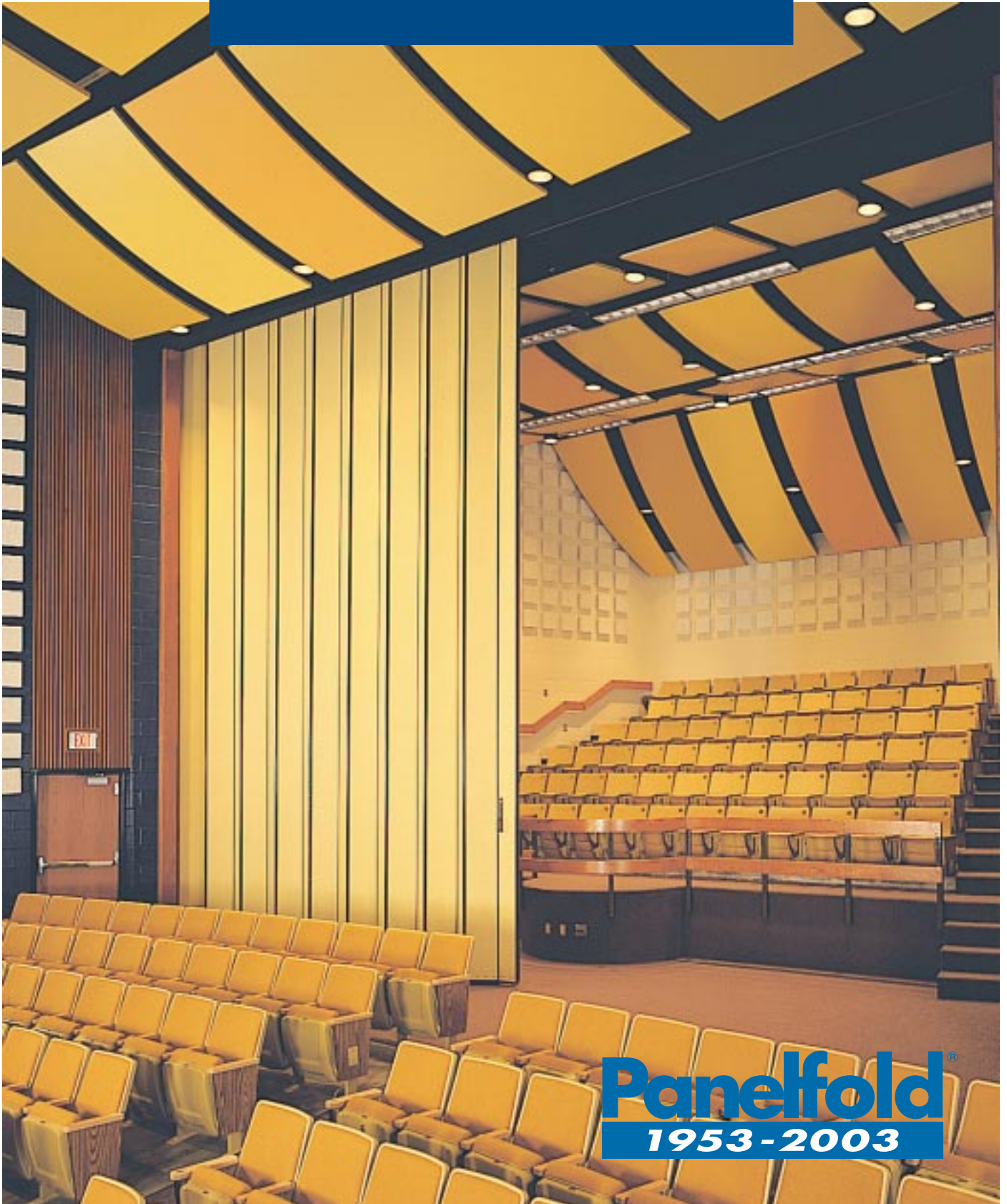
MODEL 840/640 AND 840 GWE (Electric)

Panels continuously hinged together are top supported trucks of four radial type, steel ball-bearing wheels. Electric chain driven models with optional SafetyFlex™ infrared system make extremely large openings quick and easy to close and open. Available in heights to 26 feet (4925 mm).



Sonicwal®

10650/PAN
BuyLine 7239



Panelfold®
1953-2003

Laminated Panel Accordion Partitions

Sonicwal® Laminated Panel Accordion Partitions

Design integrity and understanding of functional space has made Panelfold the first preference of the discriminating designer for over four decades. **Sonicwal** is the acoustical folding partition that has evolved through Panelfold's commitment to excellence and understanding of multiple use areas. **Sonicwal's** functional aesthetics and visual harmony offer solutions for hospitality, corporate, civic, medical, religious, and educational facilities.

- Sound ratings from STC 42 to STC 50
- Twelve, eight, and six inch wide panels
- Sound absorption ratings to NRC .70
- Machine laminated panel surfaces
- Manual or electrical operation
- Available to eighteen feet high

SUPERIOR DESIGN AT A COMPETITIVE PRICE

Sonicwal Rigid Panel Acoustical Folding Partitions feature strong, durable, laminated panels and a fabulous collection of affordable surface options including wood veneers, high pressure laminates, wood grain vinyls, textured vinyls, luxurious wall carpeting, and panel fabrics... and the highest acoustical ratings of any accordion partition made.

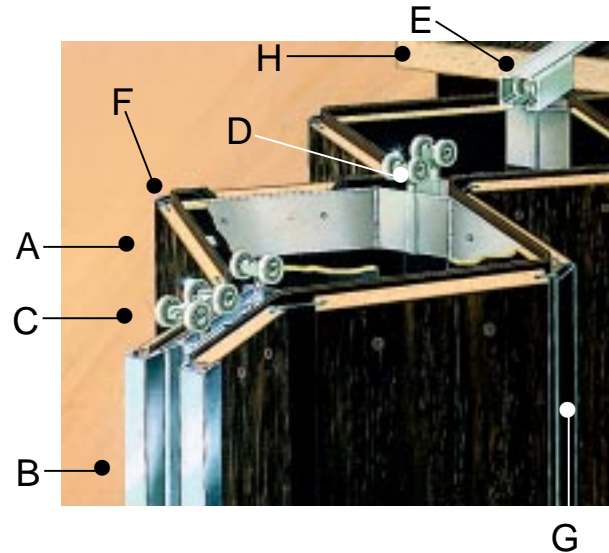
ACOUSTICAL PERFORMANCE

Sonicwal Accordion Partitions are offered with five laboratory certified sound transmission class ratings from STC 42 to STC 50. And an optional noise reduction coefficient of NRC .70 is available on one or both sides of STC 42 rated models. To create quiet spaces,



Sonicwal partitions employ exclusive hinging systems that acoustically de-couple the panels on one face of the partition from those on the other face. This makes possible the structural, durability and appearance advantages of rigid laminated panels while achieving high sound isolation.

SONICWAL CONSTRUCTION FEATURES



A. Decorative surfaces machine laminated to twin walls of strong, stable high density particleboard panels are more resistant to wear and tear than the covers on ordinary partitions.

B. Double-walled two inch thick, deep-nesting end post has dual vertical sound seals, Gripull handles and a positive latch for sound control, plus air release vents which make opening and closing accordion partitions easier.

C. Six large ball-bearing wheels on each end post support and guide the operation of these models smoothly.

D. Four large ball-bearing wheels are installed on each 16 gauge steel support bracket assembly at each volute. There are no unsupported volutes.

E. Low profile extruded aluminum track top supports the partition and provides quiet, efficient operation.

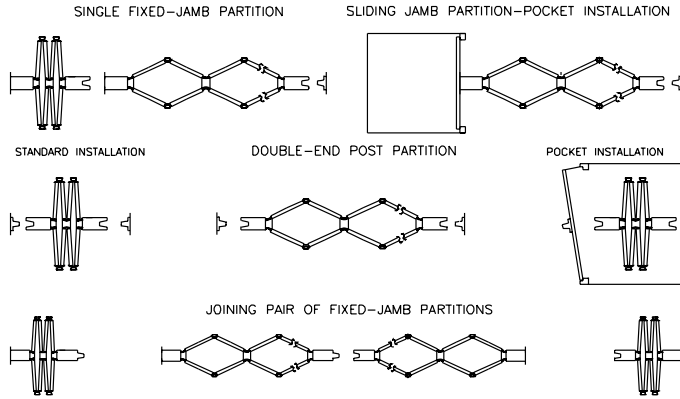
F. Three-fingered Sonicsweep™ seals are field adjustable during installation for an effective seal at top and bottom of the partition. Perfect for irregular floors.

G. Dual-walled Memory-Action® Vinyl hinges join, seal and protect panel edges from marring scrapes and blows. Made of extruded vinyl, these hinges never wear out. They acoustically dampen panels and provide "Memory-Action" causing panels to extend and stack equally.

H. Ceilingshield™ sweep seal contact head trim is available from Panelfold in white to match typical ceilings.

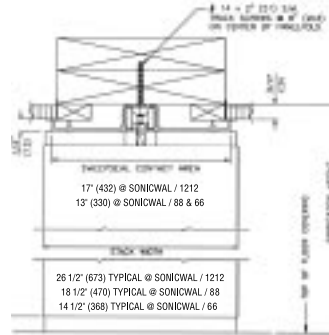
DETAILS FOR SONICWAL - ACOUSTICAL ACCORDION PARTITIONS

TYPES OF APPLICATIONS

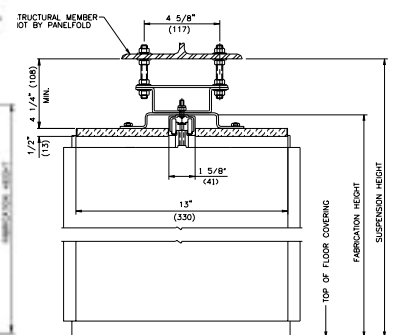


VERTICAL SECTION - HEAD DETAILS MANUAL OPERATION

HEAD TYPE 5
SURFACE MOUNTED
TRACK AND CEILINGSHIELD
BY PANELFOLD

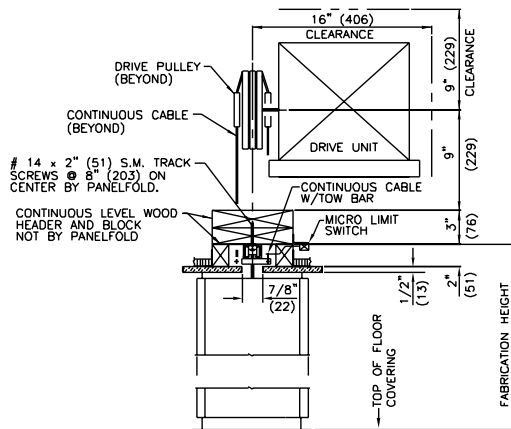


HEAD TYPE 6
HANGER RODS INSTALLATION
TRACK, BRACKETS, HANGER RODS AND
CEILINGSHIELD BY PANELFOLD

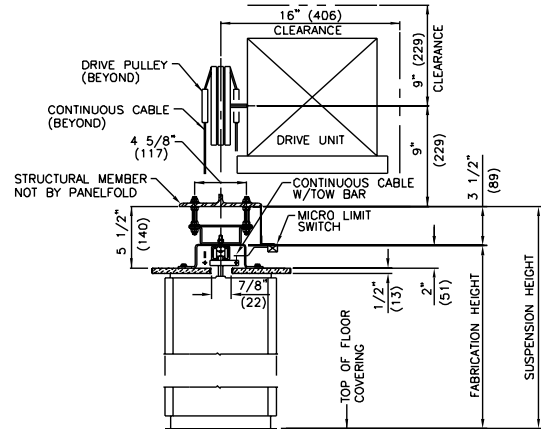


VERTICAL SECTION - HEAD DETAILS - ELECTRIC OPERATION

HEAD TYPE 7 (ELECTRIC)
DIRECT MOUNT INSTALLATION
TRACK, DRIVE UNIT AND CEILINGGUARD BY PANELFOLD



HEAD TYPE 8 (ELECTRIC)
HANGER RODS INSTALLATION
TRACK, BRACKETS/HANGER RODS, DRIVE UNIT
AND CEILINGGUARD BY PANELFOLD



All Dimensions Shown in Parentheses are Millimeters

SONICWAL PRODUCT SELECTION CHART

| FEATURES | SONICWAL/1212 | | SONICWAL/88 | | SONICWAL/66 | |
|---------------------------------------|---------------|--------|-------------------|--------|-------------------|--------|
| | STC 50 | STC 45 | STC 44 | STC 42 | STC 44, STC 42 | STC 42 |
| Modular Panel Width | 12" | | 8" | | 6" | |
| Hanging Weight (lbs/ft ²) | 7.3 | 6.7 | 7.3 | 6.7 | 7.3 | 6.7 |
| Maximum Height | 18'1" | | 18'1" | | 18'1" | |
| NRC .70 | N/A | | Optional @ STC 42 | | Optional @ STC 42 | |
| Carved or Carpeted Panels | Optional | | Optional | | Optional | |
| Electrical Operation | Optional | | Optional | | Optional | |
| Interior Steel Hinge Support System | Standard | | Standard | | Standard | |
| Adjustable Sonicsweeps™ | Standard | | Standard | | Standard | |

See Page 10 for SONICWAL GUIDE SPECIFICATIONS

GUIDE SPECIFICATIONS FOR SONICWAL® ACOUSTICAL ACCORDION PARTITIONS

PART 2. PRODUCTS

2.1 ACOUSTICAL ACCORDION folding partitions shall be (specify: manually or electrically operated) Sonicwal (specify: 1212; 88; Or 66) (specify: STC 50; STC 45; STC 44; or STC 42) as manufactured by Panelfold, Inc., Miami, Florida USA and installed by an authorized representative in openings prepared by others to Sonicwal requirements.

2.2 TWIN WALL PARTITION PANELS shall be bolted to 16 gauge steel panel support brackets and suspended from the steel yoke hinged at the brackets. Multi-fingered extruded vinyl Sonicsweep seals shall be installed top and bottom both sides of the partition and shall be field adjustable.

2.3 END POSTS shall have deep nesting aluminum nose with dual vertical sound seals and shall be equipped with Gripulls, latches and aluminum jamb moulds (specify: bronze ESP; or natural anodized).

2.4 TRACK AND HANGERS: Track shall be extruded aluminum with integral aluminum Ceilingshield™ Sonicsweep contact guard. Four ball-bearing wheels shall be installed on each volute and a minimum of six shall be installed on each end post.

2.5 PANEL SURFACES: Panels shall be specially laminated engineered wood core, bonded with water-resistant, plastic glue and surfaced with (specify one: architectural wood veneer; wood grain vinyl; textured vinyl; high pressure decorative laminate; or customer's own material or, Ribtex wall carpet or Woventex or Maharam Tekwall 1000 (panel fabric.) Genuine woods, wood grains and colors from manufacturer's selectors. Optional carved design shall be provided (specify: one or both sides).

2.6 CONNECTOR HINGES: Panels shall be hinged and edge sealed to reduce sound, light and air transmission with heavy duty dual-wall, flame-resistant, extruded vinyl. Hinges shall be securely locked into and protect the panel edges. They shall provide "Memory-Action®" causing panels to extend and stack equally, smoothly and quietly. Colors from manufacturer's selector.

2.7 HARDWARE: Security units shall be as specified: Privacy lock one side only; cylinder lock one side only; Cylinder lock one side, privacy lock other; Cylinder lock two sides. Master-keyed cylinder lock by others shall be installed in lieu of regularly furnished cylinder.

2.8 FIRE RETARDANCY: Optional. Panels shall be made up of fire retardant cores (ASTM E84-70 laboratory tunnel tested with 20 flame spread, 15 fuel contributed, 15 smoked developed).

2.9 CURVED TRACK, SWITCHES AND MULTIPLE MEETING POSTS: Furnish to effect room division as detailed on the plans. Minimum radius 3'0" (914mm).

2.10 STACK FORMULA: (Approximately) Sonicwal/1212 1 1/8"/ft. (94mm/m); Sonicwal/88 1 5/8"/ft. (135mm/m); Sonicwal/66 2 1/4"/ft. (187mm/m); + 8 1/2" (216mm), manually operated; 12 1/2" (308mm) for electrical operation.

2.11 HANGING WEIGHT: (Approximately) STC 50 7.3 lbs/ft² (36kg/m²); STC 45 6.7 lbs/ft² (33kg/m²); STC 44 7.3 lbs/ft² (36kg/m²); STC 42 6.7 lbs/ft² (33kg/m²).

For complete 3-Part specifications, see Product Briefs, Interactive CD-ROM or Panelfold website at www.panelfold.com

Scale/12® • Scale/8® Laminated Single Panel Folding Partitions

Panelfold is recognized as the leading manufacturer of quality wood folding partitioning. Nothing exemplifies this reputation more than the materials and workmanship that Panelfold puts into every **Scale/12** and **Scale/8** the single panel-wall partitions that stand up to tough commercial and institutional use.

- Strong, durable laminated panels
- Dual-walled Memory Action® vinyl hinges
- Optional sound ratings of STC 25 and STC 30
- Manual or electrical operation
- Heights to eighteen feet

QUALITY CONSTRUCTION

Scale/12 and **Scale/8** partitions offer many of the appearance and reliability advantages of Sonicwal twin panel-wall models: extra-thick high density particleboard panels machine laminated with a wide selection of wood veneers or high pressure laminates with solid faces or carved surface detailing, or with wall carpets, or with economical textured and wood grain vinyls; panels joined and edge-sealed with Panelfold's exclusive

lifetime, dual-walled Memory Action Hinge Design®; extra heavy steel ball-bearing wheels that support alternate panels; and end posts fitted with deep nesting, structural, extruded aluminum end post nose and jamb mould in bronze or natural finish.

FEATURES AVAILABLE

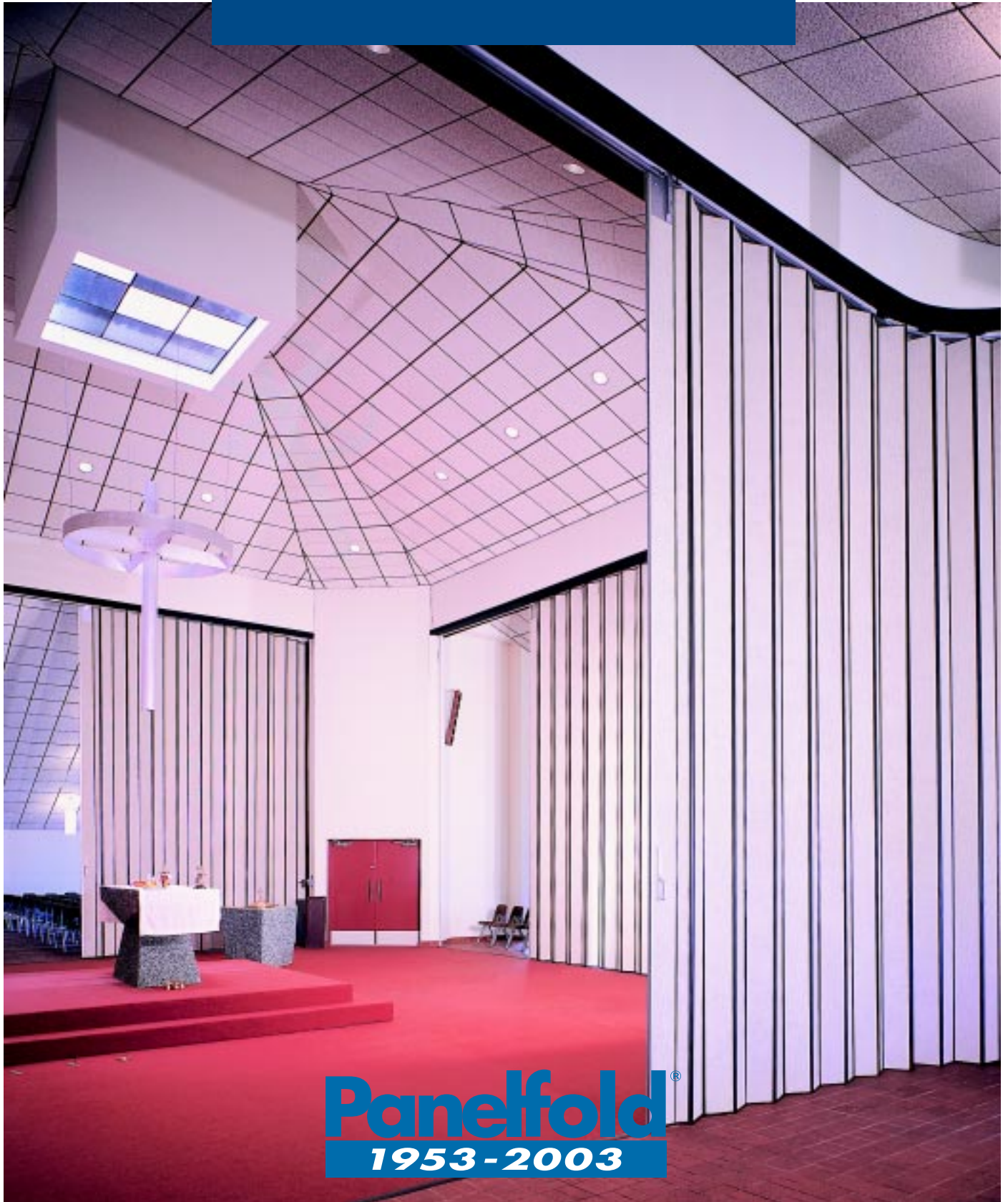
Multiple use areas may be fashioned with **Scale/12** and **Scale/8** partitions incorporating curved tracks, curved and cross-over switches, and two, three and four-way meeting posts. Privacy and cylinder key lock security options are available. Even electrical operation may be specified. Whether selected for sight or sound control, **Scale/12** and **Scale/8** are affordable, good looking hard panel alternatives to other accordion partitioning.

ACOUSTICAL TREATMENT

Scale/12 achieves optional STC 30 and **Scale/8** achieves STC 25 by adding Sonicsweep seals top and bottom, Ceilingshield™, dual-row end post sound seals, positive latches and Panelfold's exclusive Trakseal™ track closure device. "Trakseal" stops

Scale/12[®] • Scale/8[®]

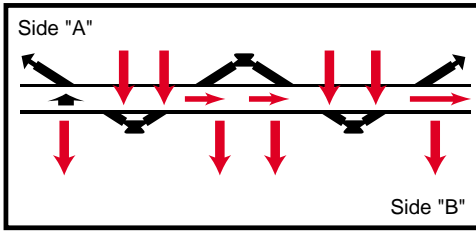
10650/PAN
BuyLine 7239



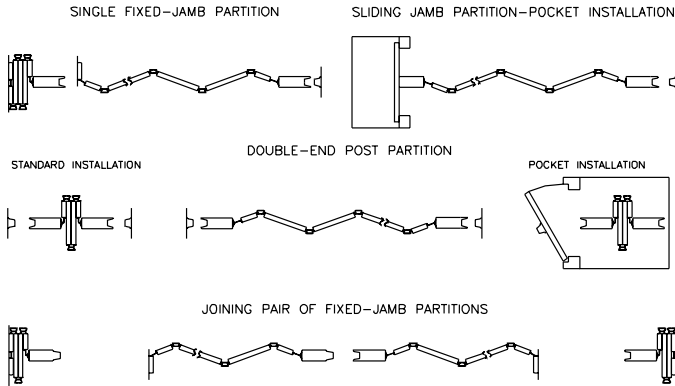
Panelfold[®]
1953-2003

Laminated Single Panel Folding Partitions

unwanted sound from entering the void of the overhead track on one side of the opening (Side "A") and exiting to the opposite side (Side "B")

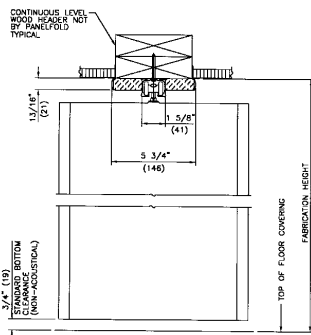


TYPES OF APPLICATIONS

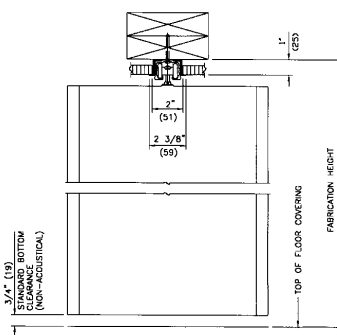


VERTICAL SECTION - HEAD DETAILS FOR SCALE/12 AND SCALE/8 FOLDING PARTITIONS

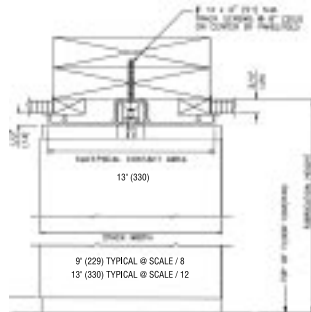
HEAD TYPE 2
SURFACE MOUNTED INSTALLATION
TRACK AND TRACK MOULD
BY PANELFOLD



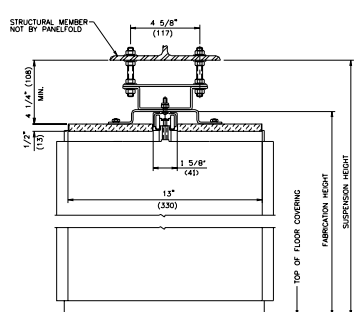
HEAD TYPE 3
RECESSED INSTALLATION
TRACK AND SUBCHANNEL
BY PANELFOLD



HEAD TYPE 9 (ACOUSTICAL)
SURFACE MOUNTED INSTALLATION
TRACK AND INTEGRAL
CEILINGSHIELD BY PANELFOLD



HEAD TYPE 6 (ACOUSTICAL)
HANGER RODS INSTALLATION
TRACK, BRACKETS/HANGER RODS
AND CEILINGUARD BY PANELFOLD



All Dimensions Shown in Parentheses are Millimeters

For complete details and specifications, see Product Briefs, Interactive CD-ROM or Panelfold website at www.panelfold.com

GUIDE SPECIFICATIONS FOR SCALE/12® AND SCALE/8® FOLDING PARTITIONS

PART 2. PRODUCTS

2.1 FOLDING PARTITIONS shall be (specify: acoustical or non-acoustical; manually or electrically operated; Scale/12 (STC 30); or Scale/8 (STC 25) as manufactured by Panelfold, Inc., Miami, Florida USA and installed by an authorized representative of the manufacturer in openings prepared by others to Scale/12•Scale/8 requirements.

2.2 ACOUSTICAL TREATMENT (optional) shall consist of extruded vinyl Sonicsweep seals installed top and bottom; Ceilingshield; extruded vinyl Trakseal track closure; vertical end post seals; and positive latch.

2.3 TRACK AND HANGERS: Track shall be heavy duty extruded aluminum. Two ball-bearing wheels shall be suspended on alternate panels and four on each end post.

2.4 PANEL SURFACES: Panels shall be specially laminated engineered wood core, bonded with water-resistant, plastic glue and surfaced with (specify one: architectural wood veneer; wood grain vinyl; textured vinyl; high pressure decorative laminate; or Ribtex wall carpet or Woventex III Panel fabric); Genuine woods, wood grains and colors from manufacturer's selectors. Optional carved design shall be provided (specify: one or both sides).

2.5 CONNECTOR HINGES: Panels shall be hinged and edge sealed against sound, light and air transmission with heavy-duty, dual-wall, flame-resistant, extruded vinyl. Hinges shall be securely locked into and protect the panel edges. They shall provide "Memory-Action®" causing panels to extend and stack equally, smoothly and quietly. Color from manufacturer's selector.

2.6 TRIM: Non-acoustical partitions shall be supplied with track mould to conceal track or extruded aluminum sub-channel for recess track. For acoustical partitions, see "Acoustical Treatment", paragraph 2.2.

2.7 HARDWARE: Partitions shall have deluxe Gripull handles and automatic latches and jamb mould for jamb closure (specify: bronze ESP or natural anodized). Security units shall be as specified. Optional master-keyed insert type cylinder by others shall be installed in lieu of regularly furnished cylinder.

2.8 FIRE RETARDANCY: (Optional) Where specified, panels shall be made up of fire retardant cores (ASTM E84-70 laboratory tunnel tested with 20 flame spread, 15 fuel contributed, 15 smoke developed).

2.9 CURVED TRACK, SWITCHES AND MULTIPLE MEETING POSTS: Furnish to effect room division as detailed on the plans. Minimum radius 3'0" (914mm).

2.10 STACK FORMULA: (Approximately) Scale/12 11/16"/ft. (914mm/m); Scale/8 1" (82mm/m); plus 5" (127mm) for each end post, manually operated; 9" (229mm) for electrical operation.

2.11 HANGING WEIGHT: Approximately 3 lbs/ft2 (15kg/m2).



Fabricwal®

10650/PAN
BuyLine 7239



Panelfold®
1953-2003

Soft Covered Accordion Partitions

Fabricwal® Soft Covered Accordion Partitions



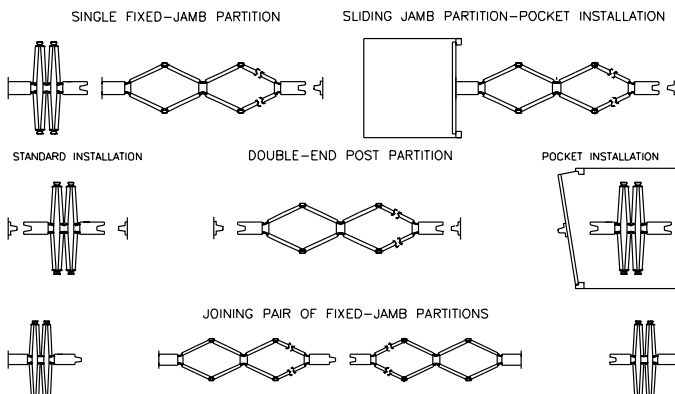
Panelfold's Fabricwal Accordion Partitions combine the best features of the other popular brands of fabric accordion partitions with added timely innovations. Sight dividing models as well as acoustically rated models may be specified.

- Sound ratings of **STC 39 and STC 40**
- **Steel pantograph framework**
- **Exclusive adjustable sweepseals**
- **Vinyl, fabric, or carpet covers**



AIR RELEASE vents allow air trapped during the operation of the partition to escape for easier operation. Gripull handles and positive latches are standard.

TYPES OF APPLICATIONS



For complete details and specifications, see Product Briefs, Interactive CD-ROM or Panelfold website at www.panelfold.com

GUIDE SPECIFICATIONS

PART 2. PRODUCTS

2.1 ACCORDION PARTITION shall be (specify: Fabricwal non-acoustical; STC 39; or STC 40); (specify: manually or electrically operated) as manufactured by Panelfold, Inc., Miami, Florida, USA.

2.2 ACOUSTICAL TREATMENT: Continuous vinyl sweep seal installed both sides, fixed at top and adjustable at bottom; formed steel insulating panels, continuously lined with acoustical membrane; deep-nesting end posts with sound seals; and positive latch. Partitions shall be as independently tested in accordance with ASTM E90-85.

2.3 FRAMEWORK shall be formed 16 gauge steel pantograph hinge plates welded to 3/16" diameter steel rods. Install a single row top and bottom at 42" intervals of height. Install double row at top over 12'1" high. Steel alloy carrier pendant shall be suspended from reinforced hinge channel.

2.4 COVERS of heavy duty, Class "A" flame spread rated vinyl with 100% polyester backing or covers of wall carpet or panel fabrics shall be steel leaf fastened to the frame. Colors to be selected from manufacturer's standards

2.5 TRACK shall be heavy duty extruded aluminum (with integral Ceilingshield™ for recessed track applications). Two ball-bearing wheels shall be installed at every other volute and four wheels at each end post.

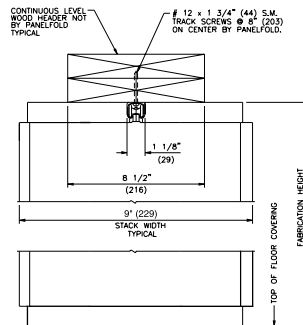
2.6 END POSTS of fabric or carpet covered 16 gauge (1.6mm) formed steel shall have deep-nesting natural anodized aluminum nose with 3/8" (10mm) diameter holes to release trapped air; Gripull™ handles, automatic latches and jamb mould.

2.7 STACK FORMULA: (Approx.) 2"/ft. (167mm/m) plus 4" (102mm) for each end post.

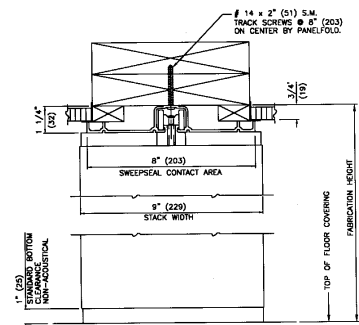
2.8 HANGING WEIGHT: (Approx.) Non-acoustical 2.0 lbs./ft2 (10kg/m2); STC 39, 5.0 lbs./ft2 (23kg/m2); STC 40, 5.5 lbs./ft2 (27kg/m2).

VERTICAL SECTION - HEAD DETAILS

HEAD TYPE 1
SURFACE MOUNTED
INSTALLATION TRACK
BY PANEFOLD



HEAD TYPE 9
TRACK WITH INTEGRAL
CEILINGSHIELD
BY PANEFOLD



All Dimensions Shown in Parentheses are Millimeters



Panelfold® Surfaces & Colors

You may select from an extensive line of surfaces and colors. Color selectors are available.

WOOD VENEERS



WHITE ASH



NATURAL BIRCH



RED OAK



AMERICAN WALNUT

WOODTEX WOOD GRAIN VINYL



WHEATWOOD™



HONEYWOOD™



CANYONWOOD™



SABLEWOOD™

STARTEX™ TEXTURED VINYL



WHITE



ROSE MIST



OYSTER



CLOUD

SANDEX™ MULTICOLOR VINYL



OYSTER



GREIGE



EARLY SKY



MORNING MIST



DOVER



CORAL SAND



PEARL



SEA FOAM

FABRICTEX FABRIC TEXTURED VINYL



ROPETEX ROPE TEXTURED VINYL



SNOW DRIFT



TAUPE



FROSTY



CLOUD

HIGHTEX™ HIGHLY TEXTURED VINYL



CLOUD



FAWN



ANTIQUE ROSE



CEMENT

RIBTEX BASIC™ VERTICAL RIB WALL CARPET



MALIBU



BUCKSKIN



SAND



TAUPE



CLOUD



FLINT



MEADOW



CARNIVAL

WOVENTEX® I & II PANEL FABRICS



ROSE



BRITTANY



ORCHID



TWILIGHT

WOVENTEX® III PANEL FABRICS



BURNISH



LILAC



SUN DRENCHED



MORRIS CODE

TEK-WALL® 1000® PANEL FABRICS



BISCUIT BEIGE



WOODROSE PETAL



PEBBLE BEACH

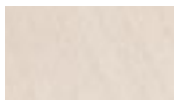


SPRAY MIST



In colors to blend or contrast with panel finish. Color selection card is available.

WILSON ART® OR FORMICA® DECORATIVE LAMINATES



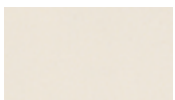
SANIBEL MAPLE



SHERIL WALNUT



WINDSOR MAHOGANY



CASHMERE



STORM NEBULA

For color selections, see Selectors, Interactive CD-ROM or Panelfold website at www.panelfold.com

PrimeSpacer® Relocatable Walls



PrimeSpacer® Series 300 floor-supported portable panel walls install quickly between ceilings and floors without permanent attachments, and relocate without loss of material. They feature **Sheer Look®** panel edges with no exposed trim. **Model 350** self-contained instantly portable panels are set in place like furniture; releasing the top spring-bias mechanism engages the panel against the ceiling. **Model 360** factory-assembled panels are retained by ceiling and jamb channels.

Panelfold®

P.O. Box 680130, Miami, Florida 33168

305/688-3501 Fax: 305/688-0185 E-mail: sales@panelfold.com Internet: www.panelfold.com

Panelfold products are manufactured and sold under Panelfold®. Moduflex®, Sonicwal®, Fabricwal®, Closetwal®, Scale®, Europa®, Accent®, EchoSorb™, Criterion®, Plasticdor™, Canedor®, Carvedor®, Glazedor®, Mirrordor™, Startex™, Fabrictex®, Ropetex®, Woodtex®, Softex™, Ribtex®, Woventex®, Sheer Look®, PrimeSpacer®, Signature®Series, Firecoustic®, Acoustiflame®, Action Track®, Memory Action®, Memory Action Hinge Design®, Panelok™, Traklok™, Touch-bar™, Gripull™, Drawtite™, Ceilinguard™, Ceilingshield™, Trakseal™, Sonicsweep™, SafetyFlex™, Autoseal™, and Manuseal™ trademarks; U.S. Patent Nos. 4454690, and 4867221. Canadian Patent Nos. 1139155, 1148410, and 1260974. Other U. S. patents pending. Other foreign patents issued and pending. Panelfold is constantly developing its products and reserves the right to change specifications or materials without notice. Form No. SA407GD. Printed in U.S.A.

Panelfold also manufactures a broad line of Folding Doors. Please refer to Sweet's 08350/PAO